

[Aspire IDE Core](#)

Aspire IDE Core

---

- [1 Users Guide](#)
  - [2 Developers Guide](#)
    - [2.1 Requirements](#)
    - [2.2 Acquiring the source code:](#)
    - [2.3 Running the Project](#)
- 

## **Users Guide**

Under construction

## **Developers Guide**

This section provides information on how to download and run AspireRfidIDE Product within an Eclipse Environment. Requirements

### **Hardware (minimum)**

- P IV 1.2GHz or equivalent
- 512 MB Ram
- 50 MB free HD space

### **Software**

- Java 1.6
- [Eclipse 3.4](#) and above (with RCP/Plug-in Development Environment plug-ins and [Subversive plug-in](#))

Acquiring the source code:

The source code is available for checkout at the AspireRFID forge [SVN](#). Check it out by:

- Check it out by hitting the create new repository location button at the SVN Repositories view of the Eclipse's subversion [plug-in](#) and by using the following URL at the window that appears:  
"svn://svn.forge.objectweb.org/svnroot/aspire/trunk/AspireRfidIDE"

**\*\*Right click the repository that has been just created and hit the check out button**

- Import the AspireRFID IDE projects to the Eclipse environment
  - Hit File -> Import -> General -> Existing Projects into Workspace and select for the root directory the project you have just checked out (AspireRfidIDE).
  - Select all the projects from the list (they are the AspireRFID plug-ins with the AspireRfidIDE core)
  - Uncheck the Copy projects into workspace and hit finish.

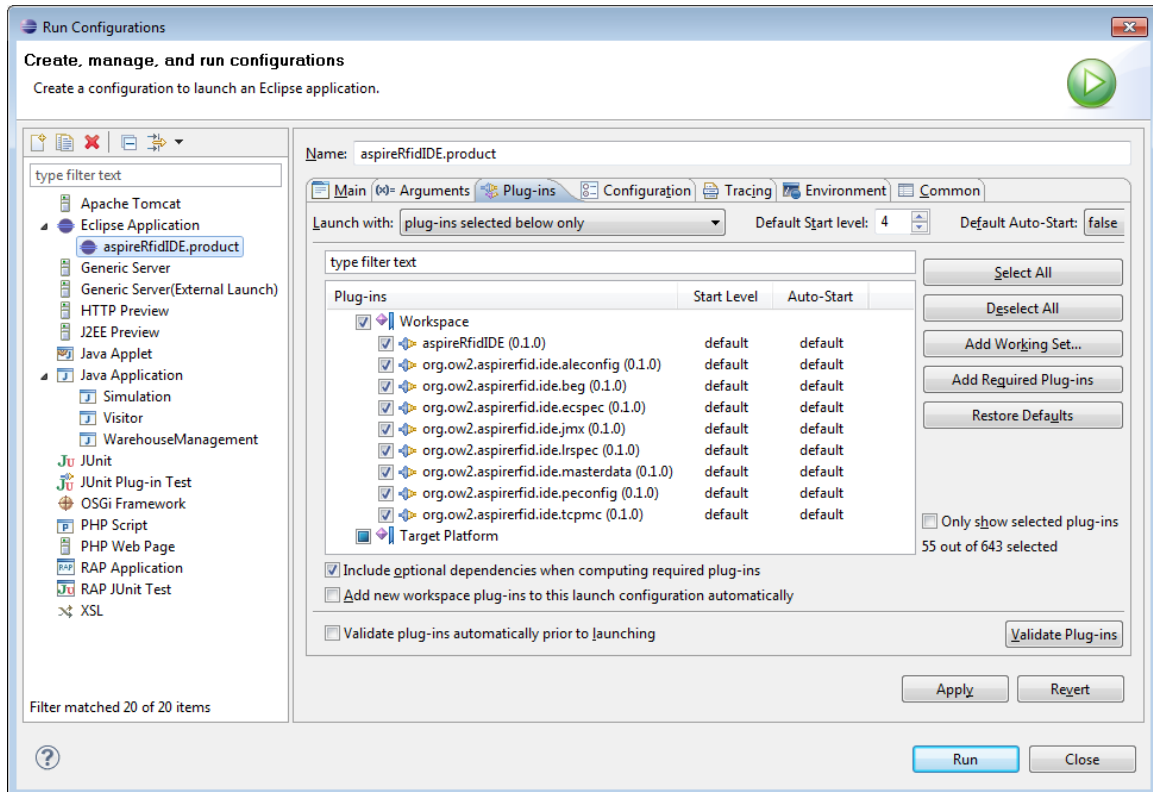
Running the Project

- Go to the Eclipse's Package Explorer
- Right click the aspireRfidIDE project and go to Run As> Eclipse Application (this is done to automatically create the lunch configuration)
- Close the window that have appeared and lets go to configure the lunch command.
- Go to Run> Run Configurations and at the list on the left choose the aspireRfidIDE.product
- At the "Main" tab (Workspace Data) check the "Clear" and the "Ask for confirmation before clearing" boxes.
- At the "Arguments" tab (Program arguments:) you could add the "-console" and "-consolelog" arguments to gain more control over the OSGi debug console window.
- Now at the "Plug-ins" Tab hit "deselect all" and from the Plug-ins list choose the "aspireRfidIDE" (which is the core of the AspireRFID IDE enviroment [AspireRfidIDE Core](#)) and any other AspireRfid

# Aspire Wiki - ObjectWeb - AspireRfidIdeCore

IDE plug-in you would like to run from the list below:

- org.ow2.aspirerfid.ide.aleconfig ( [ALE Server Configurator](#) )
  - org.ow2.aspirerfid.ide.beg ( [BEG](#) )
  - org.ow2.aspirerfid.ide.ecspec ( [EC-Spec Editor](#) )
  - org.ow2.aspirerfid.ide.jmx ( [Physical Reader Configurator](#) )
  - org.ow2.aspirerfid.ide.lrspec ( [LR-Spec Editor](#) )
  - org.ow2.aspirerfid.ide.masterdata ( [Master Data Editor](#) )
  - org.ow2.aspirerfid.ide.peconfig ( [Prog. Engine Configurator](#) )
  - org.ow2.aspirerfid.ide.tcpcmc ( [TCP Message Capturer](#) )
  - Business Process Workflow Management Editor ( [BPWM Editor](#) ):
    - org.ow2.aspirerfid.ide.bpwme
    - org.ow2.aspirerfid.ide.bpwme.diagram
    - org.ow2.aspirerfid.ide.bpwme.edit
  - Master Data Editor GMF ( [Business Loc. GMF Editor](#) ):
    - org.ow2.aspirerfid.ide.MasterDataEditorGMF
    - org.ow2.aspirerfid.ide.MasterDataEditorGMF.diagram
    - org.ow2.aspirerfid.ide.MasterDataEditorGMF.edit
    - org.ow2.aspirerfid.ide.MasterDataEditorGMF.layout
- Hit the "Add Required Plug-ins" button
  - And finally hit the "Apply" and then the "Run" Button.



[Aspire IDE Core](#) (en)

Creator: xwiki:XWiki.nkef Date: 2009/01/30 13:14

Last Author: xwiki:XWiki.nkef Date: 2010/06/18 16:03

Copyright (c) 2008-2010, [Aspire](#)